

YEAR 2018

COVERAGE (B) STATION 4217

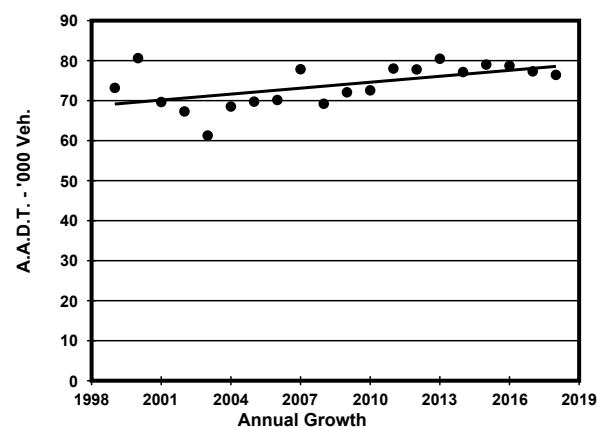
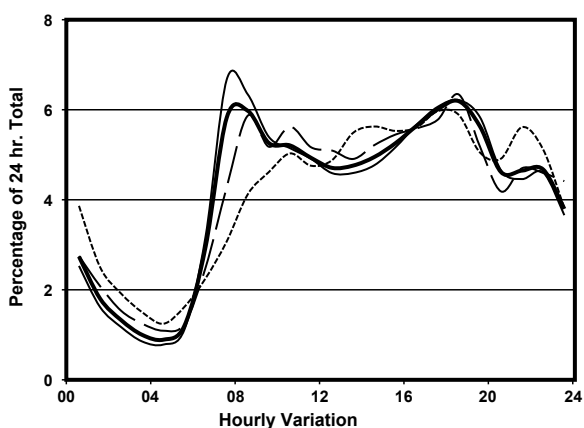
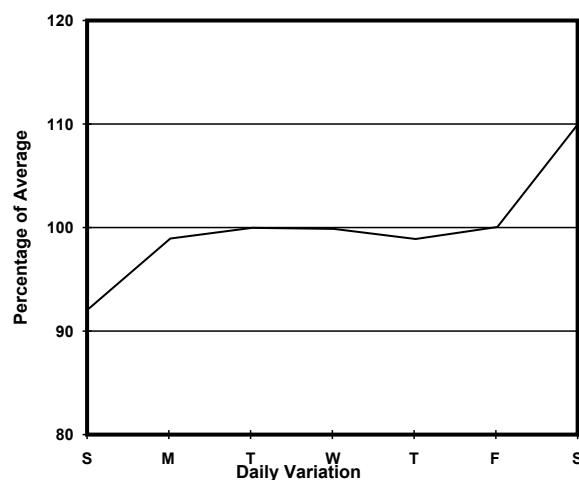
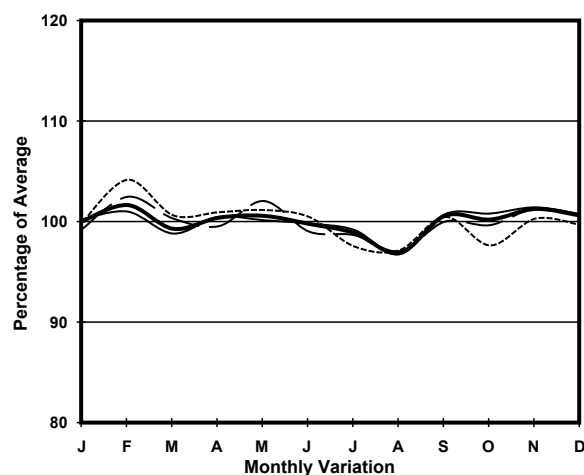
ROAD NETWORK MAJOR

ROAD TYPE PRIMARY DISTRIBUTOR

LINK CLEAR WATER BAY RD (from LUNG CHEUNG RD to
NEW CLEAR WATER BAY RD WESTERN JUNCTION)



1. TRAFFIC FLOW VARIATION AND GROWTH



2. TRAFFIC CHARACTERISTICS (BY DIRECTION)

Parameter	All - Day	Mon. - Fri.	Sat.	Sun.
EAST BOUND				
A.A.D.T.	42890	43060	46680	39420
R 12 / 24 - %	62.3	63	62.1	58.9
R 16 / 24 - %	83.9	84.8	82.4	80.4
AM Peak Hour	0800-0900	0700-0800	0800-0900	0900-1000
One-way flow at AM peak hour	2400	2550	2730	1780
T - % (AM)	-	9.4	-	-
PM Peak Hour	1800-1900	1800-1900	1800-1900	1700-1800
One-way flow at PM peak hour	2950	3140	2830	2320
T - % (PM)	-	5.6	-	-
Prop.of commercial vehicles - 16 hr.	-	8.2	-	-
WEST BOUND				
A.A.D.T.	33550	33310	37810	31410
R 12 / 24 - %	67.8	68.8	67.4	62.6
R 16 / 24 - %	84.8	85.4	84.1	82.4
AM Peak Hour	0700-0800	0700-0800	0800-0900	0900-1000
One-way flow at AM peak hour	2200	2550	2230	1490
T - % (AM)	-	10.1	-	-
PM Peak Hour	1700-1800	1700-1800	1800-1900	1800-1900
One-way flow at PM peak hour	2090	2100	2530	1950
T - % (PM)	-	7.3	-	-
Prop.of commercial vehicles - 16 hr.	-	8.5	-	-

3. OTHER INFORMATION AND COMMENT

4. Vehicle classification and occupancy - Monday to Friday

Time		Class of vehicle									
		Motor Cycle	Private Car	Taxi	Private LB	PLB	Goods veh.		Non Fr. Bus	Fr. Bus	
							Light	M & H		SD	DD
0700-0800 Peak hour	Pro	6.0	51.4	12.4	2.6	8.6	9.1	2.2	3.7	0.1	3.9
	Ocp	1.1	1.6	2.1	5.3	12.2	1.6	1.2	10.8	21.0	59.2
0800-0900	Pro	4.5	48.0	10.4	2.3	10.7	14.9	3.5	1.9	0.1	3.6
	Ocp	1.1	1.4	2.0	5.4	13.4	1.6	1.3	17.3	13.5	50.1
0900-1000	Pro	4.0	41.2	16.0	1.4	10.8	18.0	2.8	2.0	0.1	3.8
	Ocp	1.1	1.3	1.9	2.9	12.5	1.6	1.2	13.5	9.5	31.1
1000-1100	Pro	4.1	37.6	22.1	1.0	8.9	16.6	4.7	0.9	0.1	4.1
	Ocp	1.0	1.5	1.8	2.2	12.0	1.6	1.6	21.4	9.5	27.2
1100-1200	Pro	3.2	38.5	19.5	1.6	10.6	18.6	2.1	1.1	0.1	4.7
	Ocp	1.1	1.4	1.9	2.2	12.4	1.5	1.4	2.2	3.0	25.2
1200-1300	Pro	2.5	38.9	19.4	3.5	8.8	17.7	2.2	2.2	0.1	4.8
	Ocp	1.0	1.5	2.0	3.6	10.9	1.6	1.6	9.4	13.5	25.1
1300-1400	Pro	3.5	35.2	18.6	3.0	10.1	18.3	4.9	1.5	0.1	4.8
	Ocp	1.0	1.5	1.9	4.9	10.6	1.6	1.5	6.6	13.5	28.1
1400-1500	Pro	3.2	39.9	19.3	2.3	7.8	18.8	3.0	1.2	0.0	4.5
	Ocp	1.0	1.5	1.9	4.2	10.9	1.7	1.2	12.1	0.0	25.4
1500-1600	Pro	2.7	40.5	16.6	5.4	8.7	15.3	2.9	3.7	0.1	4.2
	Ocp	1.0	1.4	1.9	7.2	12.6	1.6	1.1	23.0	15.0	30.7
1600-1700	Pro	4.7	36.5	16.1	4.6	9.3	16.6	2.3	6.1	0.1	3.7
	Ocp	1.1	1.4	1.9	4.0	14.0	1.6	1.5	10.6	15.0	40.3
1700-1800	Pro	5.1	45.4	15.9	2.9	10.9	12.6	2.1	1.5	0.1	3.5
	Ocp	1.1	1.4	2.1	2.4	13.5	1.5	1.3	1.9	22.0	47.5
1800-1900	Pro	4.6	50.0	14.2	0.6	11.9	12.1	1.2	1.1	0.1	4.1
	Ocp	1.1	1.4	2.1	1.5	13.7	1.3	1.3	14.8	14.0	58.9
1900-2000	Pro	5.0	52.2	19.2	0.3	11.4	7.1	0.5	0.5	0.1	3.7
	Ocp	1.1	1.4	2.0	1.3	10.7	1.6	1.5	8.4	20.0	39.7
2000-2100	Pro	4.0	43.9	26.4	0.0	11.1	8.5	0.6	0.5	0.1	5.0
	Ocp	1.4	1.4	2.0	0.0	9.4	1.5	1.2	1.0	8.7	25.3
2100-2200	Pro	5.1	38.4	30.4	0.3	12.8	6.6	0.6	0.5	0.1	5.3
	Ocp	1.1	1.7	1.9	2.5	9.3	1.5	1.8	2.3	1.0	26.2
2200-2300	Pro	6.4	44.7	29.3	0.0	10.9	3.3	0.6	0.0	0.1	4.6
	Ocp	1.1	1.4	1.9	0.0	10.0	1.2	1.2	0.0	3.0	25.4
16 hours	Pro	4.4	43.3	18.3	2.0	10.2	13.4	2.3	1.9	0.1	4.2
	Ocp	1.1	1.4	1.9	4.4	11.9	1.6	1.3	12.1	12.2	36.2

Legend

Pro. Proportion of vehicles in % (Sum may not add up to 100% due to figure rounding)*

Ocp. Average occupancy of vehicles including both driver and passengers*

M&H Medium and Heavy

***** All traffic data are collected from combined bounds except for one way traffic